

PCB LAYOUT  
TOP VIEW

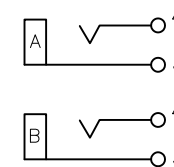
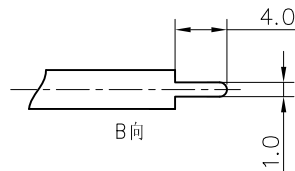
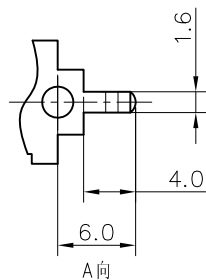
NOTES:

ELECTRICAL:

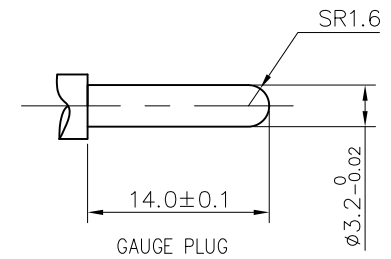
- 1: RATED CURRENT: 0.2A Max.
- 2: RATED VOLTAGE: 50V AC.
- 3: CONTACT RESISTANCE: 30 MILLIOHMS Max.  
AFTER TESTING: 100 MILLIOHMS Max.
- 4: INSULATION RESISTANCE: 100 MEGAOHMS Min.
- 5: DIELECTRIC WITHSTANDING VOLTAGE: 500 VAC Min.

MECHANICAL:

- 1: INSERTION FORCE: 3N-30N.
  - 2: WITHDRAWAL FORCE: 3N-30N.
  - 3: DURRABILITY: 100 CYCLES.
- ENVIRONMENTAL:  
TEMPERATURE RANGE: -20°C TO 60°C.



SCHEMATIC



GAUGE PLUG

ANGLE	±5'
63 < L	±0.5
16 < L ≤ 63	±0.4
4 < L ≤ 16	±0.3
L ≤ 4	±0.2

TOL TABLE:  
THIS DOCUMENT IS THE PROPERTY OF  
ZHENGWEI ELECTRONICS CO.,LTD.,NO  
PART THEREOF MAY BE REPRODUCED  
AND USED WITHOUT THE PRIOR WRITTEN  
CONSENT OF THE OWNER

MODEL NAME: RCA-206A  
(PART NO.)

MAT'L: See table	DESIGN: X.H.Wang 08/13'18
FINISH: See table	CHECKED: L.W.Wu 08/13'18
Q'TY: /	APPROVED: X.Q.Hu 08/13'18



广东正宝科技有限公司  
GUANGDONG TRENPRO TECHNOLOGY CO. LTD.

TITLE: RCA PIN JACK

DWG NO.: REV.: A

UNIT: mm VIEW: SCALE: 5:1 SHEET: 1/1 SIZE: A3