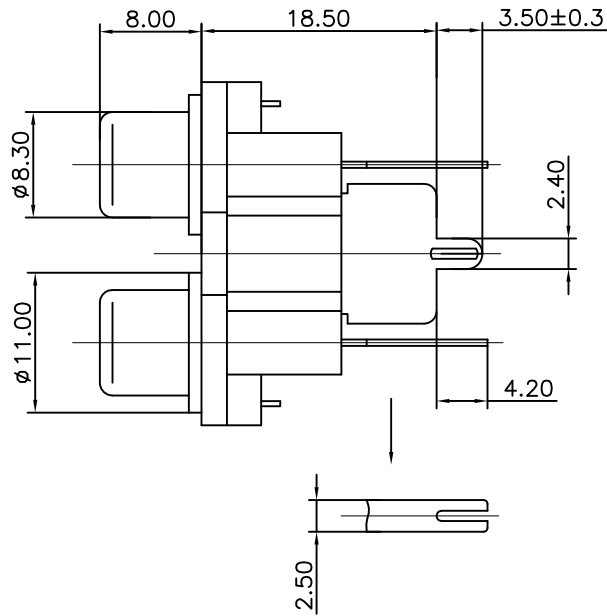
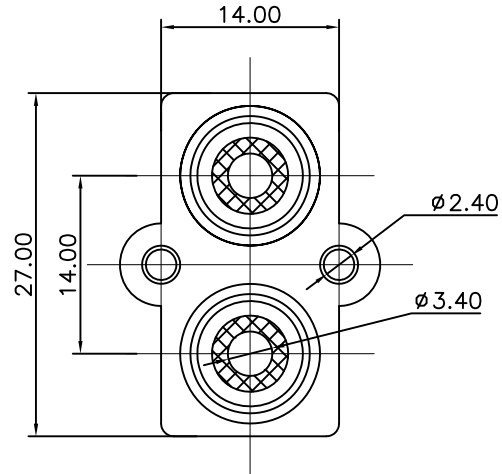
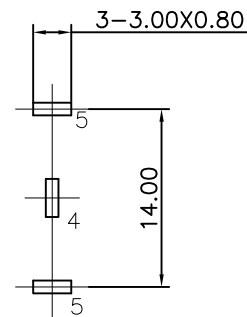


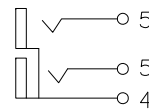
REV.	ECN NO.	MODIFIED MARK	APPROVED
A	—	FIRST RELEASE	



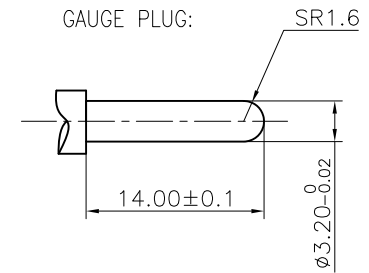
NOTES:
 ELECTRICAL:
 1:RATED CURRENT: 0.2A Max.
 2:RATED VOLTAGE: 50V AC.
 3:CONTACT RESISTANCE: 30 MILLIOHMS Max.
 AFTER TESTING:100 MILLIOHMS Max.
 4:INSULATION RESISTANCE: 100 MEGAOHMS Min.
 5:DIELECTRIC WITHSTANDING VOLTAGE: 500 VAC Min.
 MECHANICAL:
 1:INSERTION FORCE: 3N-30N.
 2:WITHDRAWAL FORCE: 3N-30N.
 3:DURRABILITY: 100 CYCLES.
 ENVIRONMENTAL:
 TEMPERATURE RANGE: -20°C TO 60°C.


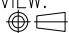


PCB LAYOUT
TOP VIEW



SCHEMATIC



ANGLE	$\pm 5^\circ$	MODEL NAME: RCA-207B (PART NO.)	 广东正宝科技有限公司 GUANGDONG TRENPRO TECHNOLOGY CO. LTD.	
63 < L	± 0.5	MAT'L: See table	DESIGN: X.H.Wang 11/02'18	TITLE: RCA PIN JACK
16 < L ≤ 63	± 0.4	FINISH: See table	CHECKED: L.W.Wu 11/02'18	DWG NO.:
4 < L ≤ 16	± 0.3	Q'TY: /	APPROVED: X.Q.Hu 11/02'18	REV.: A
L ≤ 4	± 0.2	UNIT: mm		SCALE: 5:1
TOL TABLE:		VIEW: 		SHEET: 1/1
THIS DOCUMENT IS THE PROPERTY OF TRENPRO TECHNOLOGY CO. LTD., NO PART THEREOF MAY BE REPRODUCED AND USED WITHOUT THE PRIOR WRITTEN CONSENT OF THE OWNER		SIZE: A3		