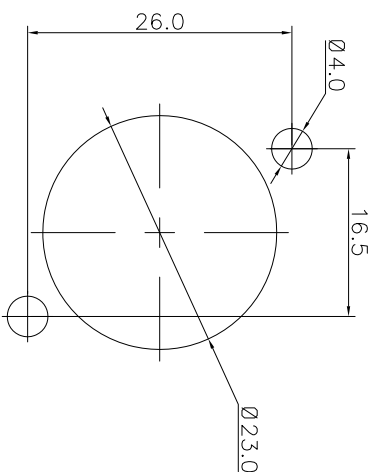
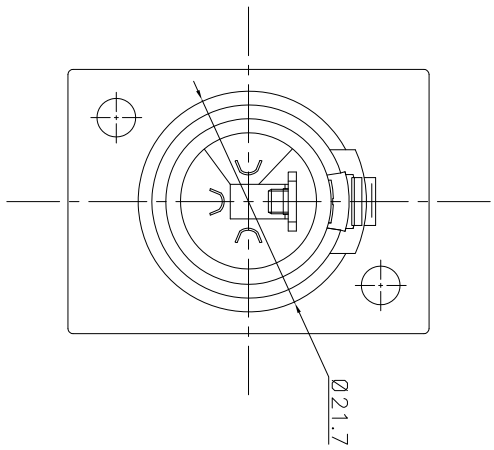
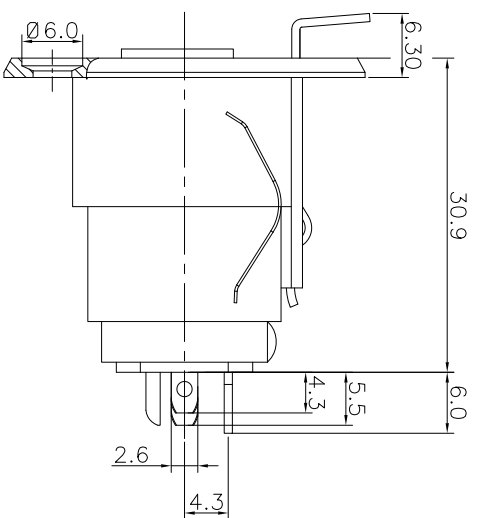
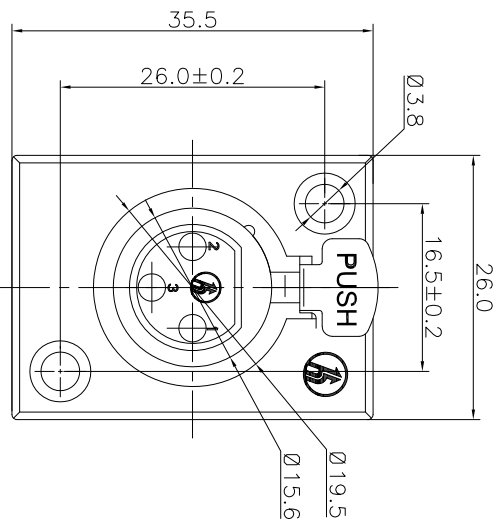


REV.	ECON NO.	MODIFIED MARK	APPROVED
A	—	FIRST RELEASE	





PANEL CUTOUT

NOTES:  
 ELECTRICAL:  
 1:RATED CURRENT: 6A Max.  
 2:RATED VOLTAGE: 50V AC.  
 3:CONTACT RESISTANCE: 30 MILLIOHMS Max.  
 AFTER TESTING:60 MILLIOHMS Max.  
 4:INSULATION RESISTANCE: 1G OHMS Min.  
 5:DILECTRIC WITHSTANDING VOLTAGE: 500 VAC Min.  
 MECHANICAL:  
 1:INSERTION FORCE: 5N-40N.  
 2:WITHDRAWAL FORCE: 5N-40N.  
 3:DURABILITY: 1000 CYCLES.  
 ENVIRONMENTAL:  
 TEMPERATURE RANGE: -30°C TO 80°C.

ANGLE	±5°
63 < L	±0.5
16 < L ≤ 63	±0.4
4 < L ≤ 16	±0.3
L ≤ 4	±0.2

TOL TABLE:  
 THIS DOCUMENT IS THE PROPERTY OF TERPRO TECHNOLOGY CO.,LTD,NO PART THEREOF MAY BE REPRODUCED AND USED WITHOUT THE PRIOR WRITTEN CONSENT OF THE OWNER

MODEL NAME: SPF-13 (PART NO.)		 广东正宝科技有限公司 GUANGDONG TERPRO TECHNOLOGY CO.,LTD.	
MAT'L:	DESIGN: X.H.Wong 08/31'18	TITLE:	XLR CABLE CONNECTORS
FINISH:	CHECKED: L.W.Wu 08/31'18	DWG NO.:	
Q'TY: /	APPROVED: X.Q.Hu 08/31'18	UNIT:	mm
		VIEW:	
		SCALE:	5:1
		SHEET:	1/1
		SIZE:	A3
		REV.:	A